

VenturiOne® Flow Cytometry Analysis Software

Software designed for
speed and simplicity



For Research Use Only. Not for use in diagnostic procedures.

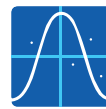
Powerful analytical tools that are simple to use

VenturiOne is unique flow cytometry software that streamlines your workflow with offline analysis and reporting. Designed for maximum performance and simplicity, VenturiOne can increase productivity and perform rapid analysis of even the largest flow cytometry standard (FCS) data files, allowing your flow cytometer to process more samples.

VenturiOne is compatible with Microsoft Windows platforms*, and offers users a familiar look and feel with intuitive tools and flexibility. It is ideal for use in research and core flow laboratory settings, and allows users to:



Analyze FCS files from any cytometer



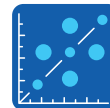
Easily create plots using unique preview feature



Process batch analyses of up to 400 files within seconds



Organize gate tabs for easy visualization of data



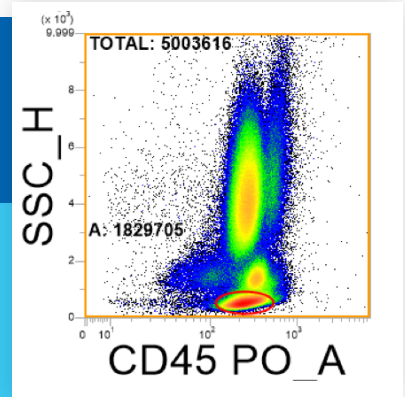
Calculate automatic compensations



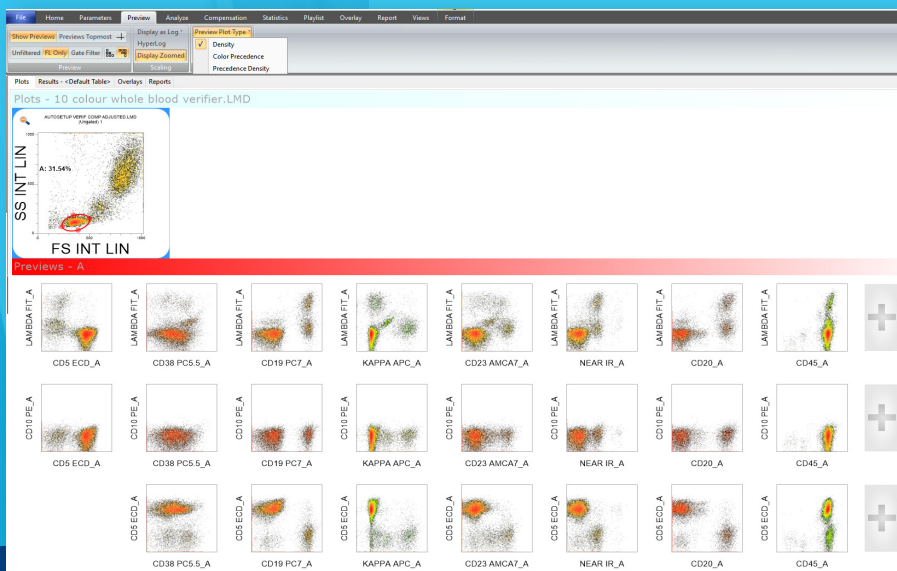
Utilize flexible reporting and result flagging capabilities

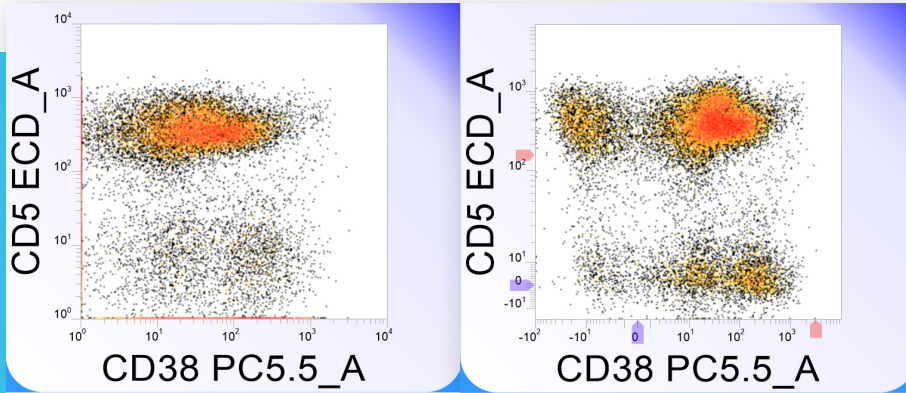
*VenturiOne® runs on Microsoft Windows 7, 10 or XP operating systems with 32 or 64 bit processors.

VenturiOne software takes full advantage of multi-core processors and is compatible with large data files produced by multiparameter rare event analysis.



Unique data previews make plot creation simple and fast.





Hyperlog sliders provide optimal data visualization.

Use the Overlay Wizard to create and view 2D & 3D overlay plots for comparative analysis using statistical markers, Overton subtractions or K-S tests.

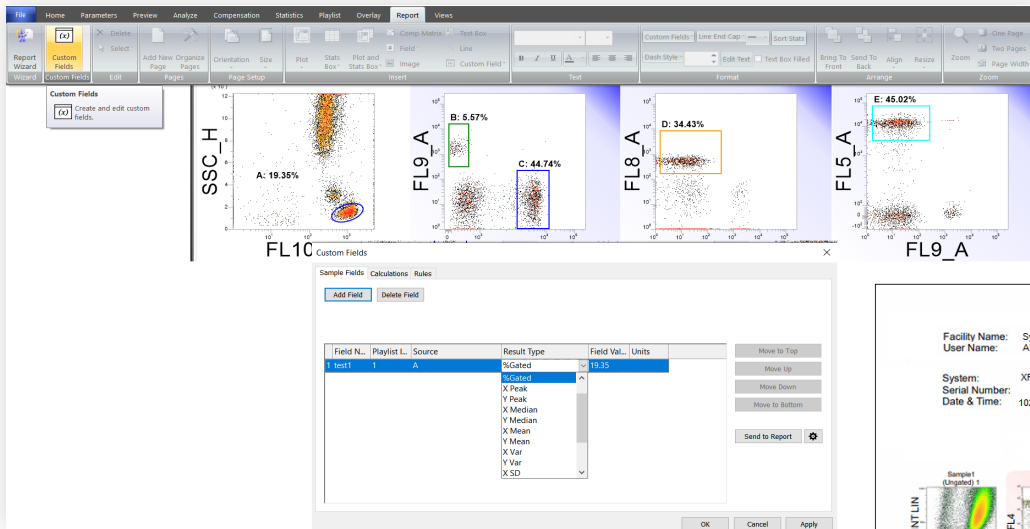
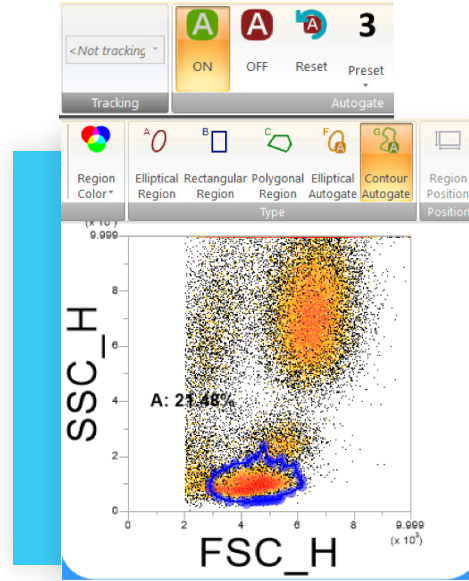
	1-48853030-A	1-48853030-A	1-48853030-A	1-48853030-A	1-48853030-A	1-48853030-A
1-48853030-A	0.00	0.00	0.00	0.00	0.00	0.00
1-48853030-A	19.44	0.00	0.00	0.00	0.00	0.00
1-48851920-A	14.10	0.00	0.00	0.00	0.00	0.00
1-48871050-A	1.25	0.00	0.00	0.00	0.00	0.00
1-48878090-A	0.13	0.00	0.00	0.00	0.00	0.00

Versatile color compensation options

- Available wizard for automatic compensation calculations
- Drag populations using sliders to adjust compensation values
- Load compensation values from LMD FCS file headers

AutoGating streamlines data analysis

- Automatic contour and elliptical region positioning
- Customizable region sensitivities
- Region tracking that automatically repositions if data changes during gating and compensation processes



Flexible reporting options with statistical region calculations and result flagging capabilities.



Sysmex Corporation
1-5-1-Wakinohama-Kaigandori Chuo-ku, Kobe 651-0073, Japan · Phone +81 78 265-0521 · www.sysmex.co.jp

Sysmex America, Inc.
577 Aptakisic Road, Lincolnshire, IL 60069, U.S.A. · Phone +1 800 379-7639 · www.sysmex.com/us

Sysmex Canada, Inc.
5700 Explorer Drive Suite 200, Mississauga, ON L4W0C6 Canada · Phone +1 905 366-7900 · www.sysmex.ca

Sysmex Latin America and the Caribbean
Rua Joaquim Nabuco 615 - Bairro Cidade Jardim, São José dos Pinhais Paraná - Brasil - CEP 83040-210 · Phone +55 41 2104-1314 · www.sysmex.com.br